

FUSION FLAT TOP

RELIABLE

Veterinary Treatment & Surgical Table

This rock solid stainless steel treatment/surgical table is manufactured with premium materials and engineering requirements. The versatile platform is anchored by an adjustable powder-coated heavy-duty steel frame for maximum stability. Hydraulic and power configurations are available.

Base Color

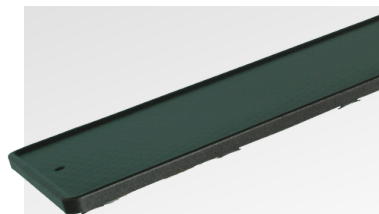


Optional Colors*

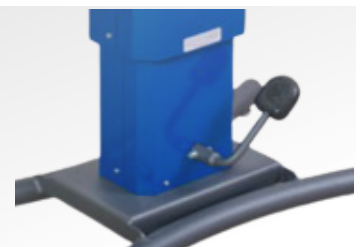


FEATURES

- Made of high-end steel and aluminum
- Premium material frame & design for maximum stability
- Resilient powder-coated surface with 5 color options
- Height Adjustment: 28.2" to 40.3"
- High-end stainless steel table top with drain
- TOP Dimensions: 58" x 23.6"
- TOP Longitudinal Tilt: Up to 90°
- Includes drain gutter and drip tray (extendable)
- Includes 2 side rails
- **Optional:** Electric or Hydraulic Height Adjustment
- **Optional:** Synthetic low skid table top
- Lift Capacity: 265lbs
- Power Supply: 120V / 60Hz



OPTIONAL SYNTHETIC TOP



OPTIONAL HYDRAULIC