

Aeron V-Top

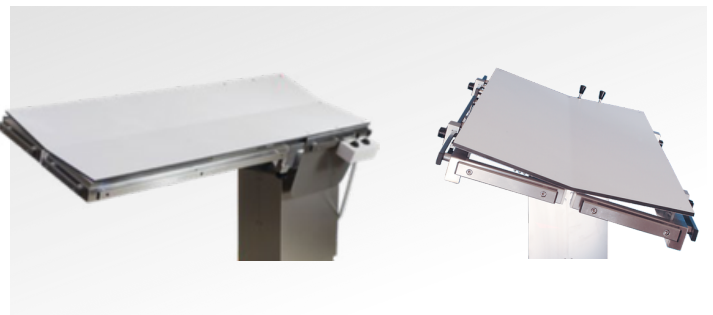
SURGERY & IMAGING

Veterinary Surgery & Treatment Table

This state-of-the-art motorized veterinary C-Arm table has been proven in hundreds of veterinary centers and hospitals around the globe. It can be configured in V-Top or Flat top models and be either battery or wall-cord powered.

FEATURES

- C-arm compatible table for veterinary and biolab
- V-top features removable side rails for C-arm use
- Fluoroscope compatible
- Power controls that allow for height adjustment (31.5"-43.5") - allows for standing surgery
- Longitudinal 15 degrees electric tilt
- Lateral 20 degrees electric tilt
- X-Ray translucent plate 55" x 19.5"
- Suitable for small animal arthroscopy
- Battery-operated or with a power cord
- Comes standard with 4 tie-down cleats
- Moveable on castors, lockable rubber legs
- Angled table plane allows the Aeron to support animals up to 250lb and also provides improved drainage during surgery
- Available as Flat or V-top X-ray translucent top



Aeron Table Specifications



STANDARD SETUP

- Aeron with castors
- Standard with V-top
- Side rails
- 4-Piece quick-release tie-down cleats
- Joystick remote box
- Standard power cord

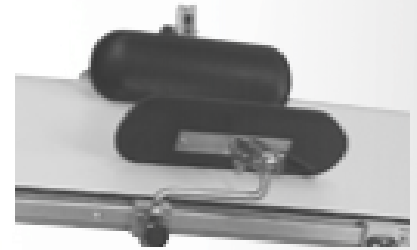
Battery powered option available

TECHNICAL SPECIFICATIONS

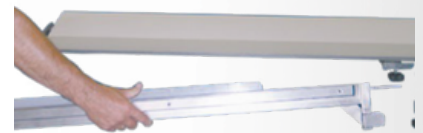
| | |
|----------------------------------|--|
| Electric Height Adjustment | 31.5 to 43.5 inches |
| Longitudinal Electric Tilting | 15° |
| Lateral Positions | Up 20° electric tilting |
| Electrical | 120v, 5.8A, 60hz |
| Optional Battery | Recharge nightly after use |
| Power Tilt | 20° Lateral, 15° Trend, 15° Reverse Trend |
| Load Capacity | 250 lbs |
| X-Ray Translucent Top Dimensions | 55" L x 19.5" W |
| Power | 110 AC outlet compatible, battery optional |
| Overall Dimensions | 20" W x 55" L |



Optional Arm Rests



Centrally divided frame



OPTIONAL ACCESSORIES

- Quick-release tie-down cleats
- Infusion pole
- Adjustable side supports
- Narcotic bow
- Leg support with cleat
- Tilting stainless dish with grid
- Rail extension pair
- Arm rests for ophthalmology
- Instrument tray 11.81 x 7.87 in
- Top extension 19.7 x 11.8 in
- Top extension 11.8 x 11.8 in

