

OP System

ADVANCED Veterinary Surgery & Treatment Table

The OP Veterinary Surgical Table is in use in major emergencies, critical care, university, and research facilities around the globe.

This unique platform has remote-controlled height adjustment from 33.5" – 45", to allow surgeons to operate ergonomically sitting or standing. 15 power-operated positions and a sliding X-Ray translucent top make this heavy-duty OP System ideal for veterinary surgery and laparoscopy.

With optional armrests, the platform is optimized for veterinary ophthalmology and neurosurgery-related procedures.

FEATURES

- C-ARM compatible X-Ray sliding top
- Designed for ophthalmology, laparoscopy, and neurosurgery-related procedures
- Perfect for complicated and difficult procedures
- Suitable for small animal arthroscopy
- Adjustable for sitting or standing operations
- Advanced power movements with remote-controlled height, longitudinal tilt, and lateral tilt
- Mobility via high-performance castors
- 264 lb load capacity



OP System Specifications



STANDARD SETUP

- OP-System with castors
- Sliding and X-ray translucent top
- Set of 4 OP rails
- 4-Piece quick-release tie-down cleats
- Remote control box
- Standard power cord



Battery powered option available

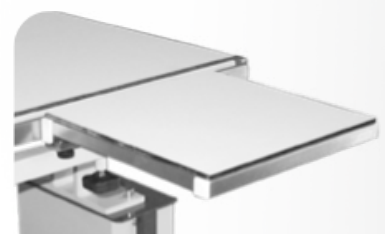
TECHNICAL SPECIFICATIONS

Electric Height Adjustment	33.5 to 45 inches (84 to 114 cm)
Longitudinal Electric Tilting	15°
Lateral Positions	Up 40° electric tilting
Clearance end measurement	2.5 inches from floor
Clearance measurement	7.25 inches middle bar/support to floor
Clearance measurement	18.5 inches underneath table top down to middle bar/support
Load Capacity	264 lbs
X-Ray Translucent Top Dimensions	51" L x 19.5" W (130 x 50 cm)
Power	110 AC outlet compatible
Overall Dimensions	22" W x 53" L

Optional Insert



Optional Extension



OPTIONAL ACCESSORIES

- Quick-release tie-down cleat
- Infusion pole
- Adjustable side supports
- Narcotic bow
- Leg support with cleat
- Tilting stainless dish with grid
- Rail extension (200 mm, pair)
- Instrument tray (300x200 mm)
- Arm rest for ophthalmology
- Top extension (500x300 mm)
- Top extension (300x300 mm)
- Insert for OP-System

